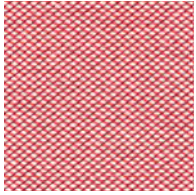


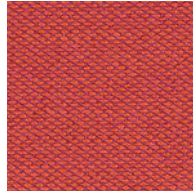
Steelcut Trio 3

kvadrat

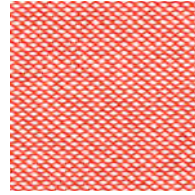
Steelcut Trio 3



636



553



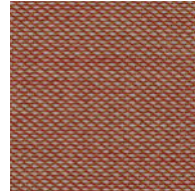
526



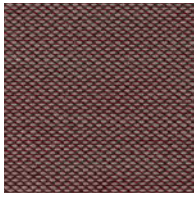
686



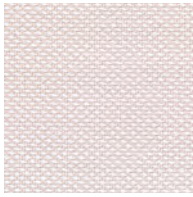
666



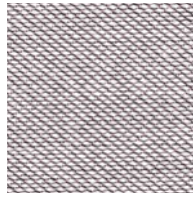
515



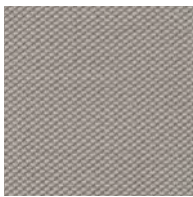
645



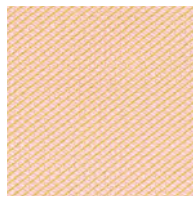
226



616



205



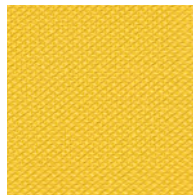
506



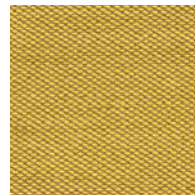
236



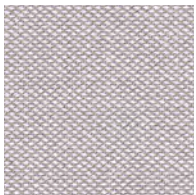
213



446



453



246

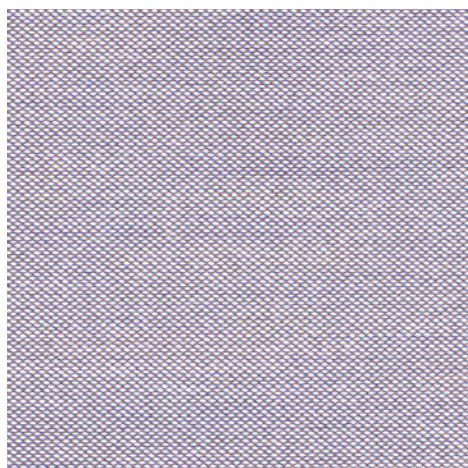


253



466

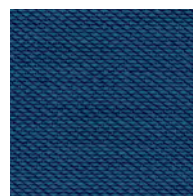
Steelcut Trio 3



806



883



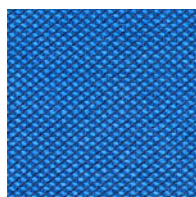
865



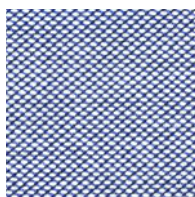
796



756



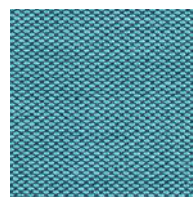
746



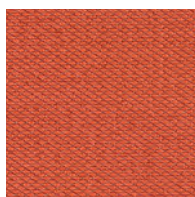
716



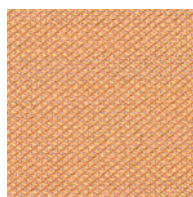
776



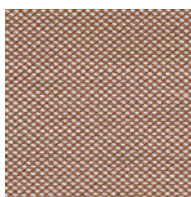
983



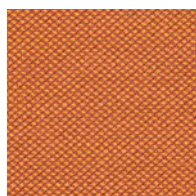
533



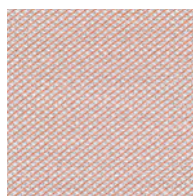
436



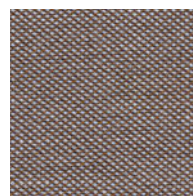
476



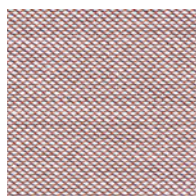
576



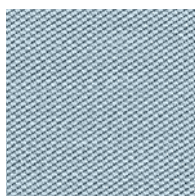
426



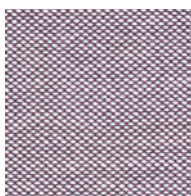
376



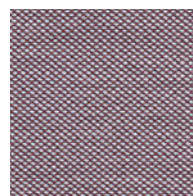
416



713

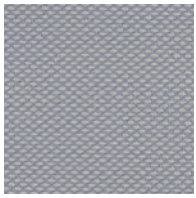


336

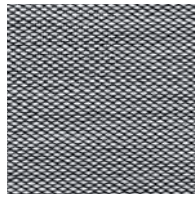


276

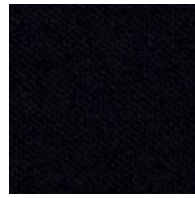
Steelcut Trio 3



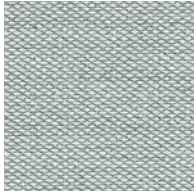
105



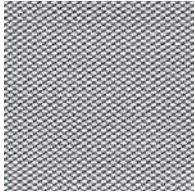
124



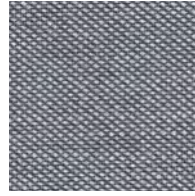
195



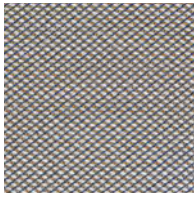
113



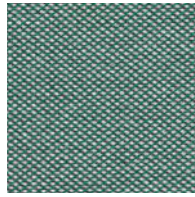
133



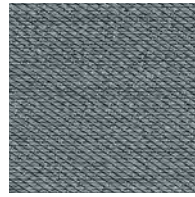
176



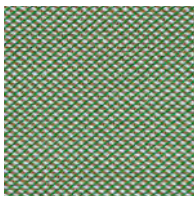
266



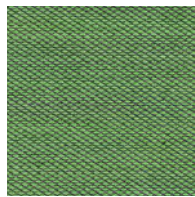
966



153



946



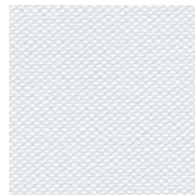
953



283



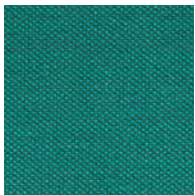
996



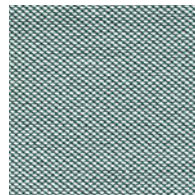
906



383



976



916

Steelcut Trio 3

Designed by Frans Dijkmeijer and Giulio Ridolfo

DK

Anvendelse Kontorer, hoteller, institutioner, private indretninger. Stor slidstyrke.

Beskrivelse 90% ny uld, kamgarn, 10% nylon. Bredde ca. 140 cm. Vægt ca. 770 g/lbm. Garnfarvet. Nuanceforskel kan forekomme.

Ægkant ↓

Slidstyrke: Ca. 100.000 slidbevægelser efter Martindale metoden EN ISO 12947. **Lysægthed** (ISO) 5-7. **Pilling** (EN ISO) 4. **Gnidægthed** (ISO) tør 4-5, våd 3-5. **Lydsorption** (EN ISO 354) 0.70/Class C (fladt), 0.95/Class A (foldet). **Airflow** 910 Pa s/m. **Flammesikring:** AS/NZS 1530.3. AS/NZS 3837 Class 2. BS 5852 Crib 5 med flammesikring. BS 5852 ignition source 3. BS 5852 part 1. EN 1021-1/2. GB 50222 B1 med flammesikring. IMO FTP Code 2010:Part 8. NF D 60 013. NFPA 260. SN 198 898 5.3 med flammesikring. UNI 9175 11M. US Cal. Bull. 117-2013. ÖNORM B1 / Q1. (Kopi af testrapport kan rekvireres).

Vedligeholdelse Se ISO symboler.

UK/US

Application Offices, hotels, institutions, domestic use. Great durability.

Description 90% new wool, worsted, 10% nylon. Width app. 55 inches (140 cm). Weight app. 24.7 oz/ly (770 g/lin.m). Yarn dyed. Colour differences may occur.

Selvedge/Direction ↓

Abrasion: App. 100,000 rubs acc. to the Martindale method EN ISO 12947. **Lightfastness** (ISO) 5-7. **Pilling** (EN ISO) 4. **Fastness to rubbing** (ISO) dry 4-5, wet 3-5. **Sound absorption** (EN ISO 354) 0.70/Class C (flat), 0.95/Class A (waved). **Airflow** 910 Pa s/m. **Flame resistance:** AS/NZS 1530.3. AS/NZS 3837 Class 2. BS 5852 Crib 5 with treatment. BS 5852 ignition source 3. BS 5852 part 1. EN 1021-1/2. GB 50222 B1 with treatment. IMO FTP Code 2010:Part 8. NF D 60 013. NFPA 260. SN 198 898 5.3 with treatment. UNI 9175 11M. US Cal. Bull. 117-2013. ÖNORM B1 / Q1. (Copy of test report available).

Care Please see the ISO symbols.

DE

Anwendungsbereich Büros, Hotels, Objectbereich, privaten Wohnbereich, Hohe Strapazierfähigkeit.

Beschreibung 90% Schurwolle, Kammgarn. 10% Nylon. Breite ca. 140 cm. Gewicht ca. 770 g/m. Garngefärbt. Farbunterschiede können vorkommen.

Webkant ↓

Scheuerfestigkeit: Ca. 100.000 Scheuerhübe nach der Martindale Methode EN ISO 12947. **Lichtechtheit** (ISO) 5-7. **Pilling** (EN ISO) 4. **Reibechtheit** (ISO) trocken 4-5, nass 3-5. **Schallabsorption** (EN ISO 354) 0.70/Class C (glatt), 0.95/Class A (gefaltet). **Airflow** 910 Pa s/m. **Flammschutz:** AS/NZS 1530.3. AS/NZS 3837 Class 2. BS 5852 Crib 5 mit Ausrüstung. BS 5852 ignition source 3. BS 5852 part 1. EN 1021-1/2. GB 50222 B1 mit Ausrüstung. IMO FTP Code 2010:Part 8. NF D 60 013. NFPA 260. SN 198 898 5.3 mit Ausrüstung. UNI 9175 11M. US Cal. Bull. 117-2013. ÖNORM B1 / Q1. (Testbericht verfügbar).

Pflege Siehe ISO Pflegesymbole.

NL

Toepassing Kantoren, hotels, instellingen, de privéfeer. Uitstekende slijtvastheid.

Omschrijving 90% scheerwol, kamgaren, 10% nylon. Breedte ca. 140 cm. Gewicht ca. 770 gr/str. m. Garegeverfd. Kleurverschillen kunnen optreden.

Zelfkant ↓

Slijtvastheid: Ca. 100.000 toeren Martindale EN ISO 12947. **Lichtechtheid** (ISO) 5-7. **Pilling** (EN ISO) 4. **Wrijftechtheid** (ISO) droge 4-5, natte 3-5. **Geluidsabsorptie** (EN ISO 354) 0.70/Class C (vlak), 0.95/Class A (geplooid). **Airflow** 910 Pa s/m. **Brandwerendheid:** AS/NZS 1530.3. AS/NZS 3837 Class 2. BS 5852 Crib 5 met behandeling. BS 5852 ignition source 3. BS 5852 part 1. EN 1021-1/2. GB 50222 B1 met behandeling. IMO FTP Code 2010:Part 8. NF D 60 013. NFPA 260. SN 198 898 5.3 met behandeling. UNI 9175 11M. US Cal. Bull. 117-2013. ÖNORM B1 / Q1. (Op aanvraag sturen wij u graag een kopie van het testrapport toe).

Onderhoud Zie de ISO symbolen.

FR

Domaine d'utilisation Tissu d'ameublement pour aménagement privé et public. Grande résistance.

Description 90% laine vierge, peignée, 10% nylon. Largeur env. 140 cm. Poids env. 770 g/m lg. Teinture sur fil. Ecart des coloris possibles.

Lisière ↓

Résistance à l'abrasion: Env. 100.000 révolutions selon le procédé Martindale EN ISO 12947. **Résistance à la lumière** (ISO) 5-7. **Boulochage** (EN ISO) 4. **Résistance au frottement** (ISO) sec 4-5, mouillé 3-5. **Absorption acoustique** (EN ISO 354) 0.70/Class C (à plat), 0.95/Class A (plié). **Airflow** 910 Pa s/m. **Normes au feu:** AS/NZS 1530.3. AS/NZS 3837 Class 2. BS 5852 Crib 5 avec traitement. BS 5852 ignition source 3. BS 5852 part 1. EN 1021-1/2. GB 50222 B1 avec traitement. IMO FTP Code 2010:Part 8. NF D 60 013. NFPA 260. SN 198 898 5.3 avec traitement. UNI 9175 11M. US Cal. Bull. 117-2013. ÖNORM B1 / Q1. (La copie du compte rendu des tests est disponible sur demande).

Entretien Voir les symboles ISO.

IT

Destinazione d'uso Rivestimenti per imbottiti, casa e contract. Alta resistenza all'abrasione.

Caratteristiche 90% lana vergine, pettinata, 10% nylon. Altezza circa 140 cm. Peso circa 770 gr/mtl. Tinto in filo. Possibili differenze per colore.

Cimosa ↓

Resistenza all'abrasione: circa 100.000 cicli/ metodo Martindale EN ISO 12947. **Resistenza alla luce** (ISO) 5-7. **Pilling** (EN ISO) 4. **Resistenza allo sfregamento** (ISO) condizione a secco 4-5, condizione umido 3-5. **Assorbimento acustico** (EN ISO 354) 0.70/Class C (tenda a pannello (tesa)), 0.95/Class A (tenda arricciata). **Airflow** 910 Pa s/m. **Ignifugazione:** AS/NZS 1530.3. AS/NZS 3837 Class 2. BS 5852 Crib 5 trattato ignifugo. BS 5852 ignition source 3. BS 5852 part 1. EN 1021-1/2. GB 50222 B1 trattato ignifugo. IMO FTP Code 2010:Part 8. NF D 60 013. NFPA 260. SN 198 898 5.3 trattato ignifugo. UNI 9175 11M. US Cal. Bull. 117-2013. ÖNORM B1 / Q1. (Disponibile copia del test).

Manutenzione Per favore seguire simboli ISO.

ES

Aplicación Adecuado para el uso en oficinas, hoteles, instituciones y hogares. Gran resistencia al desgaste.

Decripción 90% lana virgen, peinada, 10% nilón. Anchura aprox. 140 cm. Peso aprox. 770 gr/ml. Hilo teñido. Posibles variaciones de color.

Filo ↓

Resistencia al desgaste: Aprox. 100.000 ciclos según el método Martindale EN ISO 12947. **Resistencia a la luz** (ISO) 5-7. **Relleño** (EN ISO) 4. **Solidez al frotamiento** (ISO) seco 4-5, mojado 3-5. **Absorción acústica** (EN ISO 354) 0.70/Class C (estor), 0.95/Class A (cortina). **Airflow** 910 Pa s/m. **Resistencia al fuego:** AS/NZS 1530.3. AS/NZS 3837 Class 2. BS 5852 Crib 5 con tratamiento. BS 5852 ignition source 3. BS 5852 part 1. EN 1021-1/2. GB 50222 B1 con tratamiento. IMO FTP Code 2010:Part 8. NF D 60 013. NFPA 260. SN 198 898 5.3 con tratamiento. UNI 9175 11M. US Cal. Bull. 117-2013. ÖNORM B1 / Q1. (Copia del informe de ensayos disponible).

Limpieza Consulte los símbolos ISO.

JP

用途 オフィス、ホテル、各種施設、住宅インテリア。耐耗性大。

詳細 90% ニューウール。ウーステッド、10% ナイロン。幅:140cm。重量:1mあたり約770gr。糸染め。明色の場合、異質繊維が混在する場合があります。色彩ニューアンスに多少の違いが生じる可能性あり。

耳、ふち ↓

テスト

磨耗: マーチンデール法により摩擦運動約100,000回。EN ISO 12947. **色褪せ保証:** (ISO) 5-7. **ピリング** (EN ISO) 4. **摩擦保証:** (ISO) 乾燥状態 4-5、濡れた状態 3-5. **吸音率** (EN ISO 354) 0.70/Class C (バネル状)、0.95/Class A (ドレープ状)。**気流:** 910 Pa s/m. **耐炎性:** AS/NZS 1530.3. AS/NZS 3837 Class 2. BS 5852 Crib 5 に到達可能。BS 5852 ignition source 3. BS 5852 part 1. EN 1021-1/2. 特殊耐炎処理を行うことにより、GB 50222 B1 に到達可能。IMO FTP Code 2010:Part 8. NF D 60 013. NFPA 260. 特殊耐炎処理を行うことにより、SN 198 898 5.3 に到達可能。UNI 9175 11M. US Cal. Bull. 117-2013. ÖNORM B1 / Q1. (テストレポートコピー入手可能。)

手入れ

ISO シンボル参照。

CN

适用范围 办公室, 宾馆酒店, 公共设施, 居家使用。耐耗性大。

成分 90%新羊毛, 精纺, 10%尼龙。幅宽约55英寸(140 cm)。重量770克/延米, 纱染色面料。颜色可能稍有色差。

织边方向 ↓

马丁代尔法约100,000转。EN ISO 12947. **光照色牢度** (ISO) 5-7. **起毛起球** (EN ISO) 4. **磨擦色牢度** (ISO) 干燥 4-5, 湿 3-5. **吸声系数** (EN ISO 354) 0.70/Class C (隔帘布), 0.95/Class A (一般窗帘使用)。**气流阻力** 910 Pa s/m. **阻燃性:** AS/NZS 1530.3. AS/NZS 3837 Class 2. 特别耐火处理时BS 5852 Crib 5 可以满足。BS 5852 ignition source 3. BS 5852 part 1. EN 1021-1/2. 特别耐火处理时GB 50222 B1 可以满足。IMO FTP Code 2010:Part 8. NF D 60 013. NFPA 260. 特别耐火处理时SN 198 898 5.3 可以满足。UNI 9175 11M. US Cal. Bull. 117-2013. ÖNORM B1 / Q1. (可提供测试报告副本)。**维护** 请参照ISO标志。



10 year warranty



Quality and environmental system accreditation according to ISO 9001 and ISO 14001.


*ACT® Registered Certification Marks

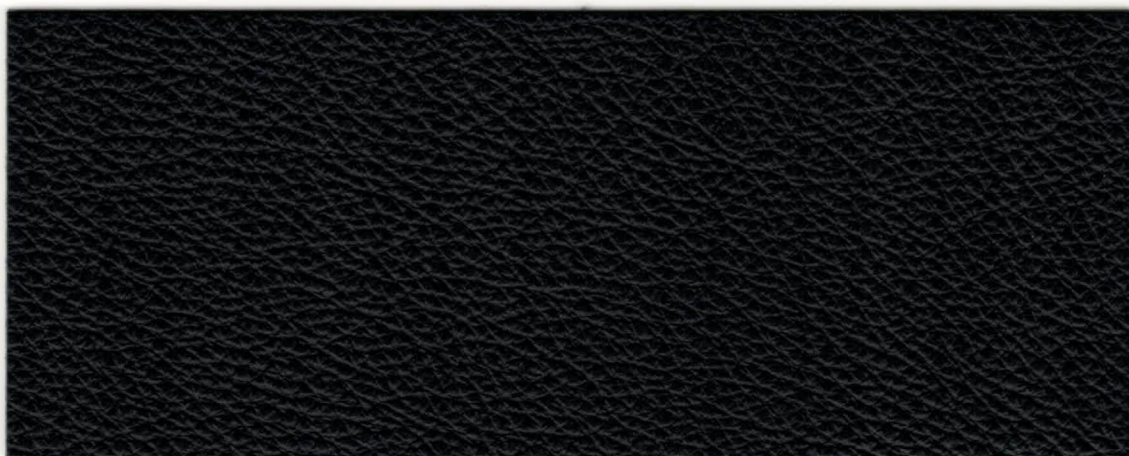
Encouraging the use of sustainable fibres. Durable and high quality. Hazardous substances restricted.

Contact and further information www.kvadrat.dk

US contact info: 1-800-620-9309

Zenso 2

Bent Hansen 



286



295



223



231



211



293



207

DK: Zenso 2

Semi anilin læder af sydamerikanske huder. Læderet er gennemfarvet og fremstår semi-mat, hvilket giver det et eksklusivt og elegant udtryk.

Tykkelse: 1,2 - 1,4 mm.

EN: Zenso 2

Semi aniline leather of South American hides. The leather is through dyed and appears semi-matt, which gives it an exclusive and elegant look.

Thickness: 1.2 - 1.4 mm.

DE: Zenso 2

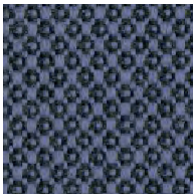
Semi anilin Leder aus südamerikanischen Rinder. Das Leder ist durchgefärbt und erscheint halbmatt, was ihm einen exklusiven und eleganten Look verleiht.

Stärke: 1,2 - 1,4 mm.

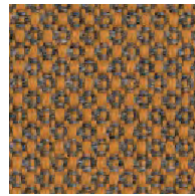
Test Analysen	Test Method Prüfverfahren	Measurement Unit Masseinheit	Guaranteed Garantiert
Colour fastness to and fro rubbing Abriebfestigkeit nach Veslic Dry/Trocken 500 c Wet/Nass 250 c Sweat/Schweiß 80 c Sweat Alkaline Solution Alkalischer Schweiß ISO 11641 pH 8	UNI EN ISO 11640	ISO 105 A03	 ≥ 4 ≥ 3/4 ≥ 3/4
Colour fastness to artificial light Xenon arc UV-Beständigkeit Xenon ARC-Labortest	UNI EN ISO 105 B02	Blue Scale Blauskala	≥ 5
Finish Adhesion Haftung der Oberflächenbehandlung	ISO 11644	N/Cm	≥ 2,5
Flexing endurance Biegefestigkeit	ISO 5402	Cycles Zyklen	> 50.000
Determination of pH Bestimmung vom pH-Wert Difference figure (only for pH < 4) Differenzindex (nur für pH < 4)	ISO 4045	pH	≥ 3,5 ≤ 0,7
Tear strength - single edge tear Reißfestigkeit Hose	ISO 3377-1	N	≥ 20

Fiord 2

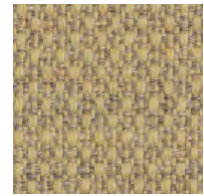
kvadrat



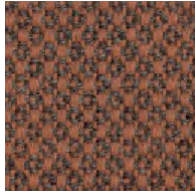
672



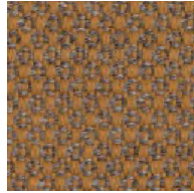
442



422



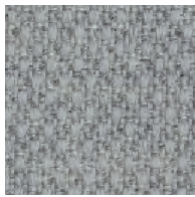
562



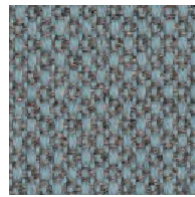
451



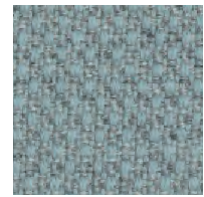
101



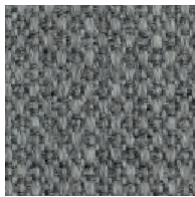
121



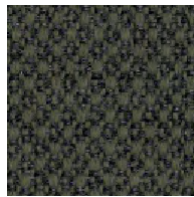
821



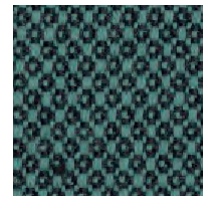
721



151



961



862



171



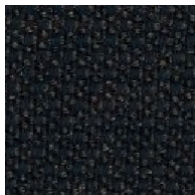
951



971



191



382

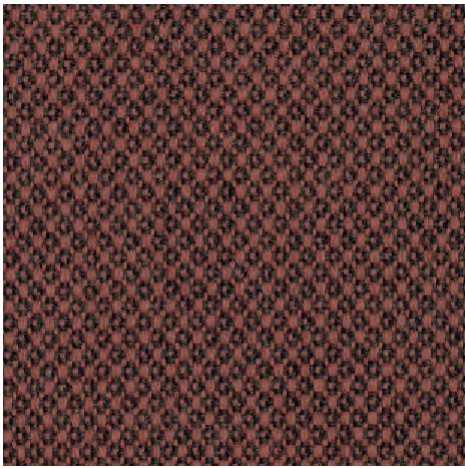


991

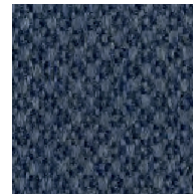


981

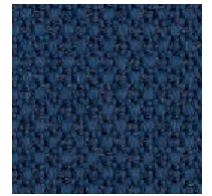
Fiord 2



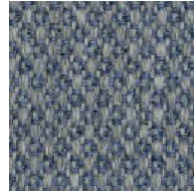
642



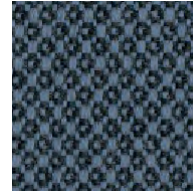
771



791



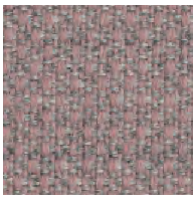
751



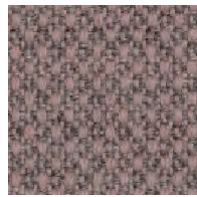
762



782



521



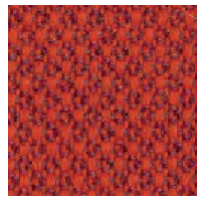
551



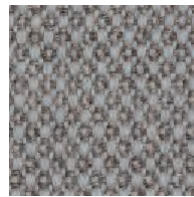
201



322



571



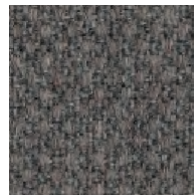
251



262



662



351



271



371



591



581



391

Fiord 2

Designed by Louise Sigvardt & Tone Barnung

DK**Anvendelse** Kontorer, hoteller, institutioner, private indretninger. Stor slidstyrke.**Beskrivelse** 92% ny uld, kamgarn, 8% nylon. Bredde ca. 140 cm. Vægt ca. 500 g/lbm.

Garnfarver. Nuanceforskelle kan forekomme.

Ægkant ↓**Slidstyrke:** Ca. 60.000 slidbevægelser efter Martindale metoden EN ISO 12947. **Lysægtthed** (ISO) 5-7. **Pilling** (EN ISO) 4-5. **Gnidægtthed** (ISO) tør 3-5, våd 3-5. **Flammesikring:** AS/NZS 3837 Class 2. ASTM E84 Class A limet. ASTM E84 Class A hæftet. BS 5852 Crib 5 med flammesikring. BS 5852 part 1. EN 1021-1/2. GB 50222 B1 med flammesikring. IMO FTP Code 2010:Part 8. NF D 60 013. NFPA 260. SN 198 898 5.3 med flammesikring. UNI 9175 11M. US Cal. Bull. 117-2013. ÖNORM B1 / Q1. (Kopi af testrapport kan rekvireres).**Vedligeholdelse** Se ISO symboler.

Desinfektion, se kvadrat.dk.

UK/US**Application** Offices, hotels, institutions, domestic use. Great durability.**Description** 92% new wool, worsted, 8% nylon. Width app. 55 inches (140 cm). Weight app. 500 g/lin.m, 16.0 oz/ly. Yarn dyed. Colour differences may occur.**Selvedge/Direction** ↓**Abrasion:** App. 60,000 rubs acc. to the Martindale method EN ISO 12947*.**Lightfastness** (ISO) 5-7. **Pilling** (EN ISO) 4-5.**Fastness to rubbing** (ISO) dry 3-5, wet 3-5.**Flame resistance:** AS/NZS 3837 Class 2. ASTM E84 Class A adhered. BS 5852 Crib 5 with treatment. BS 5852 part 1. EN 1021-1/2. GB 50222 B1 with treatment. IMO FTP Code 2010:Part 8. NF D 60 013. NFPA 260. SN 198 898 5.3 with treatment. UNI 9175 11M. US Cal. Bull. 117-2013. ÖNORM B1 / Q1. (Copy of test report available).**Care** Please see the ISO symbols.

Disinfection, see kvadrat.dk.

DE**Anwendungsbereich** Büros, Hotels, Objectbereich, privaten Wohnbereich, Hohe Strapazierfähigkeit.**Beschreibung** 92% Schurwolle, Kammgarn, 8% Nylon. Breite ca. 140 cm. Gewicht ca. 500 g/m. Garngefärbt. Farbunterschiede können vorkommen.**Webkant** ↓**Scheuerfestigkeit:** Ca. 60.000 Scheuerhübe nach der Martindale Methode EN ISO 12947. **Lichtecheit** (ISO) 5-7. **Pilling** (EN ISO) 4-5.**Reibechtheit** (ISO) trocken 3-5, nass 3-5.**Flammschutz:** AS/NZS 3837 Class 2. ASTM E84 Class A verklebt. ASTM E84 Class A unverklebt. BS 5852 Crib 5 mit Ausrüstung. BS 5852 part 1. EN 1021-1/2. GB 50222 B1 mit Ausrüstung. IMO FTP Code 2010:Part 8. NF D 60 013. NFPA 260. SN 198 898 5.3 mit Ausrüstung. UNI 9175 11M. US Cal. Bull. 117-2013. ÖNORM B1 / Q1. (Testbericht verfügbar).**Pflege** Siehe ISO Pflegesymbole.

Desinfektion, siehe kvadrat.dk.

NL**Toepassing** Kantoren, hotels, instellingen, de privéfeer. Uitstekende slijtvastheid.**Omschrijving** 92% scheerwol, kamgaren, 8% nylon. Breedte ca. 140 cm. Gewicht ca. 500 gr/str. m. Garengeverfd. Kleurverschillen kunnen optreden.**Zelfkant** ↓**Slijtvastheid:** Ca. 60.000 toeren Martindale EN ISO 12947. **Lichtecheit** (ISO) 5-7. **Pilling** (EN ISO) 4-5. **Wrijftechtheid** (ISO) droge 3-5, natte 3-5. **Brandwerendheid:** AS/NZS 3837 Class 2. ASTM E84 Class A gelijmd. ASTM E84 Class A ongelijmd. BS 5852 Crib 5 met behandeling. BS 5852 part 1. EN 1021-1/2. GB 50222 B1 met behandeling. IMO FTP Code 2010:Part 8. NF D 60 013. NFPA 260. SN 198 898 5.3 met behandeling. UNI 9175 11M. US Cal. Bull. 117-2013. ÖNORM B1 / Q1. (Op aanvraag sturen wij u graag een kopie van het testrapport toe). **Onderhoud** Zie de ISO symbolen. Desinfectie, kvadrat.dk.**FR****Domaine d'utilisation** Tissu d'ameublement pour aménagement privé et public. Grande résistance.**Description** 92% laine vierge, peigné, 8% nylon. Largeur env. 140 cm. Poids env. 500 g/m lg. Teinture sur fil. Ecart des coloris possibles.**Lisière** ↓**Résistance à l'abrasion:** Env. 60.000 révolutions selon le procédé Martindale EN ISO 12947. **Résistance à la lumière** (ISO) 5-7. **Boulochage** (EN ISO) 4-5. **Résistance au frottement** (ISO) sec 3-5, mouillé 3-5. **Normes au feu:** AS/NZS 3837 Class 2. ASTM E84 Class A collé. ASTM E84 Class A non collé. BS 5852 Crib 5 avec traitement. BS 5852 part 1. EN 1021-1/2. GB 50222 B1 avec traitement. IMO FTP Code 2010:Part 8. NF D 60 013. NFPA 260. SN 198 898 5.3 avec traitement. UNI 9175 11M. US Cal. Bull. 117-2013. ÖNORM B1 / Q1. (La copie du compte rendu des tests est disponible sur demande).**Entretien** Voir les symboles ISO. Désinfection, voir kvadrat.dk.**IT****Destinazione d'uso** Rivestimenti per imbottiti, casa e contract. Alta resistenza all'abrasione. **Caratteristiche** 92% lana vergine, pettinata, 8% nylon. Altezza circa 140 cm. Peso circa 500 gr/mtl. Tinto in filo. Possibili differenze per colore.**Cimosa** ↓**Resistenza all'abrasione:** circa 60.000 cicli/metodo Martindale EN ISO 12947. **Resistenza alla luce** (ISO) 5-7. **Pilling** (EN ISO) 4-5. **Resistenza allo sfregamento** (ISO) condizione a secco 3-5, condizione umido 3-5. **Ignifugazione:** AS/NZS 3837 Class 2. ASTM E84 Class A incollato. ASTM E84 Class A non incollato. BS 5852 Crib 5 trattato ignifugo. BS 5852 part 1. EN 1021-1/2. GB 50222 B1 trattato ignifugo. IMO FTP Code 2010:Part 8. NF D 60 013. NFPA 260. SN 198 898 5.3 trattato ignifugo. UNI 9175 11M. US Cal. Bull. 117-2013. ÖNORM B1 / Q1. (Disponibile copia del test). **Manutenzione** Per favore seguire simboli ISO. Per disinfettare, vedi il sito kvadrat.dk.**ES****Aplicación** Adecuado para el uso en oficinas, hoteles, instituciones y hogares. Gran resistencia al desgaste.**Descripción** 92% lana virgen, peinada, 8% nilón. Anchura aprox. 140 cm. Peso aprox. 500 gr/ml. Hilo teñido. Posibles variaciones de color.**Filo** ↓**Resistencia al desgaste:** Aprox. 60.000 ciclos según el método Martindale EN ISO 12947. **Resistencia a la luz** (ISO) 5-7. **Relleño** (EN ISO) 4-5. **Solidez al frotamiento** (ISO) seco 3-5, mojado 3-5. **Resistencia al fuego:** AS/NZS 3837 Class 2. ASTM E84 Class A pegado. ASTM E84 Class A sin pegar. BS 5852 Crib 5 con tratamiento. BS 5852 part 1. EN 1021-1/2. GB 50222 B1 con tratamiento. IMO FTP Code 2010:Part 8. NF D 60 013. NFPA 260. SN 198 898 5.3 con tratamiento. UNI 9175 11M. US Cal. Bull. 117-2013. ÖNORM B1 / Q1. (Copia del informe de ensayos disponible).**Limpieza** Consulte los símbolos ISO. Desinfección, visita kvadrat.dk.**JP****用途** オフィス、ホテル、各種施設、住宅インテリア。耐耗性大。**詳細** 92% ニューウール。ウーステッド、8% ナイロン。幅:140cm。重量:1mあたり約500gr。系染め。明色の場合、異質繊維が混在する場合があります。色彩ニュアンスに多少の違いが生じる可能性があります。**耳、ふち、↓****テスト****磨耗:** マーチンデール法により摩擦運動約60.000回。EN ISO 12947. **色褪せ保証:** (ISO) 5-7. **ピリング** (EN ISO) 4-5. **摩擦保証:** (ISO) 乾燥状態 3-5、濡れた状態 3-5. **耐炎性:** AS/NZS 3837 Class 2. ASTM E84 Class A adhered. ASTM E84 Class A unadhered. 特殊耐炎処理を行うことにより、BS 5852 Crib 5 に到達可能。BS 5852 part 1. EN 1021-1/2. 特殊耐炎処理を行うことにより、GB 50222 B1 に到達可能。IMO FTP Code 2010:Part 8. NF D 60 013. NFPA 260. 特殊耐炎処理を行うことにより、SN 198 898 5.3 に到達可能。UNI 9175 11M. US Cal. Bull. 117-2013. ÖNORM B1 / Q1. (テストレポートコピー入手可能。)**手入れ**

ISO シンボル参照。消毒について?kvadrat.dkまで参照ください。

CN**适用范围** 办公室, 宾馆酒店, 公共设施, 居家使用。耐耗性大。**成分** 92%新羊毛, 精纺, 8%尼龙。幅宽约55英寸(140cm)。重量500克/延米, 纱染色面料。颜色可能稍有色差。**织边方向** ↓**马丁代尔法**约60,000转。EN ISO 12947. **光照色牢度** (ISO) 5-7. **起毛起球** (EN ISO) 4-5. **摩擦色牢度** (ISO) 干燥3-5, 湿3-5. **阻燃性:** AS/NZS 3837 Class 2. ASTM E84 Class A adhered. ASTM E84 Class A unadhered. 特别耐火处理时BS 5852 Crib 5 可以满足。BS 5852 part 1. EN 1021-1/2. 特别耐火处理时GB 50222 B1 可以满足。IMO FTP Code 2010:Part 8. NF D 60 013. NFPA 260. 特别耐火处理时SN 198 898 5.3 可以满足。UNI 9175 11M. US Cal. Bull. 117-2013. ÖNORM B1 / Q1. (可提供测试报告副本)。**维护** 请参照ISO标志。消毒请参阅kvadrat.dk。

Quality and environmental system accreditation according to ISO 9001 and ISO 14001.

*ACT® Registered Certification Marks

* Abrasion test results exceeding ACT performance guidelines are not an indicator of product lifespan. Multiple factors affect fabric durability and appearance retention.

EU Ecolabel: Encouraging the use of sustainable fibres. Durable and high quality. Hazardous substances restricted.

Contact and further information www.kvadrat.dk

10 year warranty



US contact info: 1-800-620-9309

Hallingdal 65

kvadrat

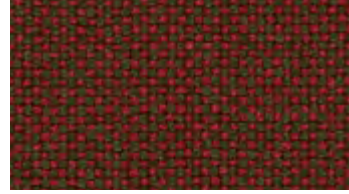
Hallingdal 65



573



563



660



694



687



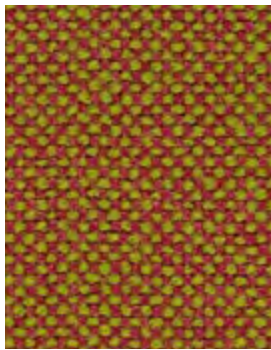
674



590



547



526



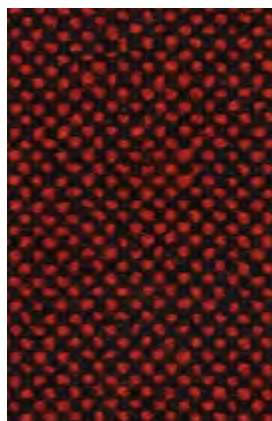
657



680



600



596

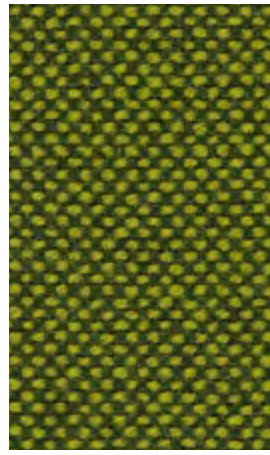
Hallingdal 65



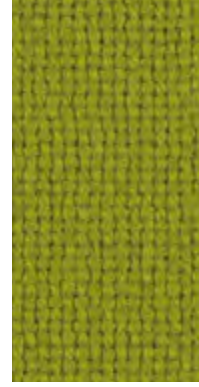
944



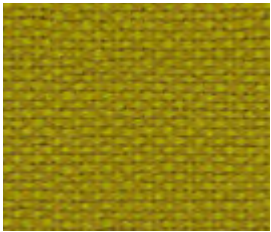
960



980



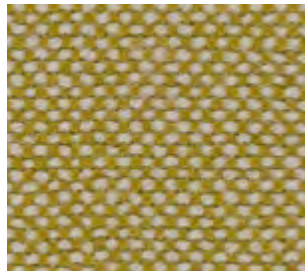
907



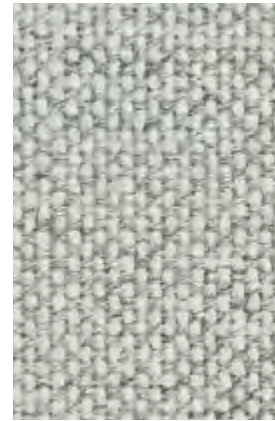
420



457



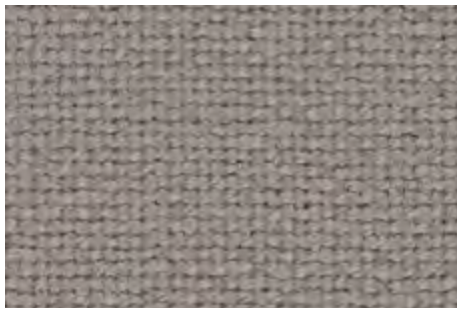
407



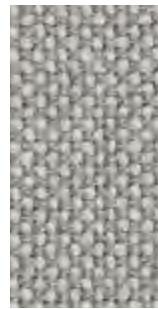
110



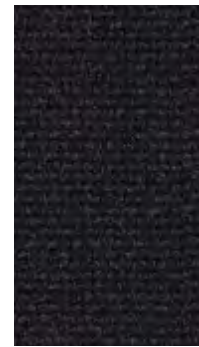
103



113



123



190



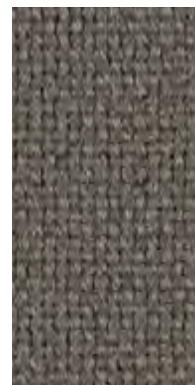
166



180



173



143

Hallingdal 65



100



200



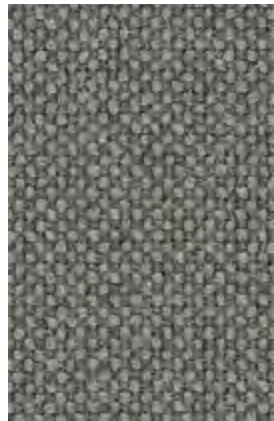
227



224



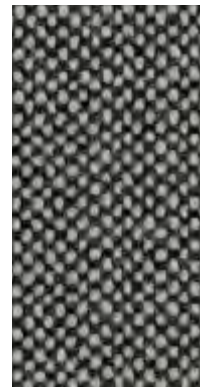
220



153



116



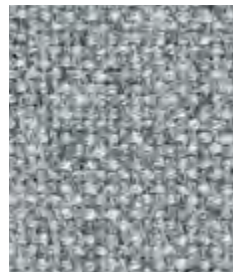
126



376



368



130



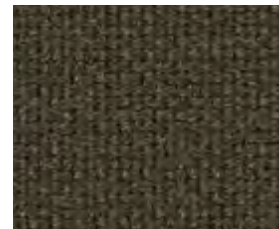
270



350

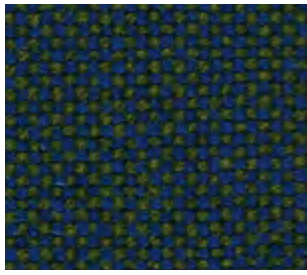


370

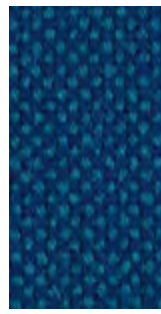


390

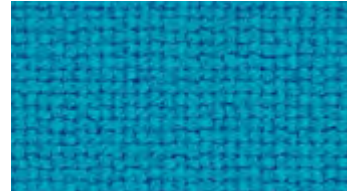
Hallingdal 65



890



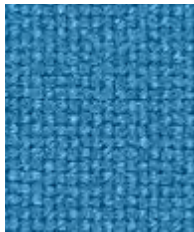
810



850



840



723



733



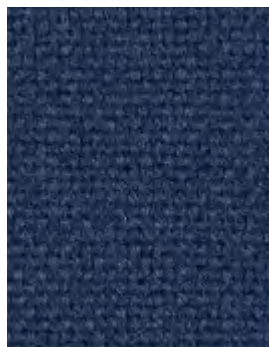
750



968



702



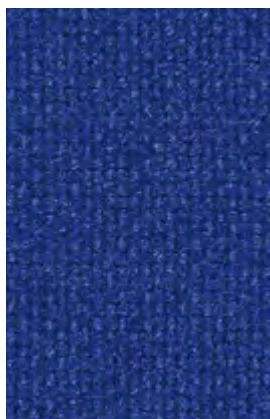
764



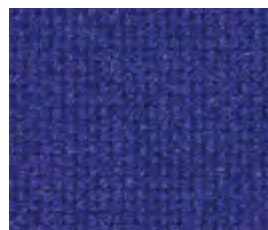
754



773



753



763

Hallingdal 65

Designed by Nanna Ditzel

DK

Anvendelse Kontorer, hoteller, institutioner, private indretninger. Stor slidstyrke.
Beskrivelse 70% ny uld, 30% viskose. Bredder 130 cm. Vægt ca. 795 g/lbm. Materialefarvet. I lyse farver kan fremmede fibre forekomme. Nuanceforskelle kan forekomme.

Ægkant ↓

Slidstyrke: Ca. 100.000 slidbevægelser efter Martindale metoden EN ISO 12947. **Lysægtighed** (ISO) 5-7. **Pilling** (EN ISO) 3-4. **Gnidægtighed** (ISO) 3-5. **Lyddabsorption** (EN ISO 354) 0.45/Class D (fladt), 0.70/Class C (foldet). **Airflow** 182 Pa s/m. **Flammesikring:** AS/NZS 1530.3. AS/NZS 3837 Class 2. ASTM E84 class A limet. ASTM E84 Class B hæftet. BS 5852 Crib 5. BS 5852 part 1. EN 1021-1/2. GB 50222 B1 med flammesikring. IMO FTP Code 2010:Part 8. NF D 60 013. NFPA 260. SN 198 898 5.3 med flammesikring. UNI 9175 11M. US Cal. Bull. 117-2013. ÖNORM B1 / Q1. (Kopi af testrapport kan rekvireres).

Vedligeholdelse Se ISO symboler. Desinfektion, se kvadrat.dk.

UK/US

Application Offices, hotels, institutions, domestic use. Great durability.
Description 70% new wool, 30% viscose. Width 51 inches (130 cm). Weight app. 795 g/lm, 25.5 oz/ly. Material dyed. Foreign fibre may occur in light colours. Colour differences may occur.
Selvedge/Direction ↓
Abrasion: App. 100.000 rubs acc. to the Martindale method EN ISO 12947*. **Lightfastness** (ISO) 5-7. **Pilling** (EN ISO) 3-4. **Fastness to rubbing** (ISO) dry 4-5, wet 3-5. **Sound absorption** (EN ISO 354) 0.45/Class D (flat), 0.70/Class C (waved). **Airflow** 182 Pa s/m. **Flame resistance:** AS/NZS 1530.3. AS/NZS 3837 Class 2. ASTM E84 class A adhered. ASTM E84 Class B unadhered. BS 5852 Crib 5. BS 5852 part 1. EN 1021-1/2. GB 50222 B1 with treatment. IMO FTP Code 2010:Part 8. NF D 60 013. NFPA 260. SN 198 898 5.3 with treatment. UNI 9175 11M. US Cal. Bull. 117-2013. ÖNORM B1 / Q1. (Copy of test report available).
Care Please see the ISO symbols. Disinfection, see kvadrat.dk.

DE

Anwendungsbereich Büros, Hotels, Objektbereich, privaten Wohnbereich. Hohe Strapazierfähigkeit.
Beschreibung 70% Schurwolle, 30% Viskose. Breite 130 cm. Gewicht ca. 795 g/lfd.m. Materialgefärbt. In hellen Farben können Fremdfasern vorkommen. Farbunterschiede können vorkommen.
Webkante ↓
Scheuerfestigkeit: Ca. 100.000 Scheuerhübe gemäß der Martindale Methode EN ISO 12947. **Lichtechtheit** (ISO) 5-7. **Pilling** (EN ISO) 3-4. **Reibechtheit** (ISO) trocken 4-5, nass 3-5. **Schallabsorption** (EN ISO 354) 0.45/Class D (glatt), 0.70/Class C (gefaltet). **Airflow** 182 Pa s/m. **Flammenschutz:** AS/NZS 1530.3. AS/NZS 3837 Class 2. ASTM E84 class A verklebt. ASTM E84 Class B unverklebt. BS 5852 Crib 5. BS 5852 part 1. EN 1021-1/2. GB 50222 B1 mit Ausrüstung. IMO FTP Code 2010:Part 8. NF D 60 013. NFPA 260. SN 198 898 5.3 mit Ausrüstung. UNI 9175 11M. US Cal. Bull. 117-2013. ÖNORM B1 / Q1. (Kopie von Prüfungsbericht verfügbar).
Pflege Siehe ISO Pflegesymbole. Desinfektion, siehe kvadrat.dk.

NL

Toepassing Kantoren, hotels, instellingen, de privéfeer. Uitstekend slijtvastheid.
Omschrijving 70% scheerwol, 30% viskose. Breedte 130 cm. Gewicht ca. 795 g/str. m. Garegeverfd. Afwijkende vezels kunnen voorkomen in lichte kleuren. Kleurverschillen kunnen optreden.
Zelfkant ↓
Slijtvastheid: Ca. 100.000 toeren Martindale EN ISO 12947. **Lichtechtheid** (ISO) 5-7. **Pilling** (EN ISO) 3-4. **Wrijfechttheid** (ISO) droge 4-5, natte 3-5. **Geluidsabsorptie** (EN ISO 354) 0.45/Class D (vlak), 0.70/Class C (geplooid). **Airflow** 182 Pa s/m. **Brandwerendheid:** AS/NZS 1530.3. AS/NZS 3837 Class 2. ASTM E84 class A gelijmd. ASTM E84 Class B ongelijmd. BS 5852 Crib 5. BS 5852 part 1. EN 1021-1/2. GB 50222 B1 met behandeling. IMO FTP Code 2010:Part 8. NF D 60 013. NFPA 260. SN 198 898 5.3 met behandeling. UNI 9175 11M. US Cal. Bull. 117-2013. ÖNORM B1 / Q1. (Op aanvraag sturen wij U graag een kopie van het testrapport toe).
Onderhoud Zie de ISO symbolen. Desinfectie, kvadrat.dk.

FR

Domaine d'utilisation Tissu d'ameublement pour aménagement privé et public. Grande résistance.
Description 70% laine vierge, 30% viscose. Largeur 130 cm. Poids env. 795 g/m lg. Teinture en bourre. Dans les couleurs claires, présence de fibres étrangères. Ecart de coloris possibles.
Lisière ↓
Résistance à l'abrasion: Env. 100.000 révolutions selon le procédé Martindale EN ISO 12947. **Résistance à la lumière** (ISO) 5-7. **Boulochage** (ISO) 3-4. **Résistance au frottement** (ISO) sec 4-5, mouillé 3-5. **Absorption acoustique** (EN ISO 354) 0.45/Class D (à plat), 0.70/Class C (plié). **Airflow** 182 Pa s/m. **Normes au feu:** AS/NZS 1530.3. AS/NZS 3837 Class 2. ASTM E84 class A collé. ASTM E84 Class B non collé. BS 5852 Crib 5. BS 5852 part 1. EN 1021-1/2. GB 50222 B1 avec traitement. IMO FTP Code 2010:Part 8. NF D 60 013. NFPA 260. SN 198 898 5.3 avec traitement. UNI 9175 11M. US Cal. Bull. 117-2013. ÖNORM B1 / Q1. (La copie du compte rendu des tests est disponible sur demande).
Entretien Voir les symboles ISO. Désinfection, voir kvadrat.dk.

IT

Destinazione d'uso Rivestimento per imbottiti casa e contract. Alta resistenza all'abrasione.
Caratteristiche 70% lana vergine, 30% viscosa. Altezza 130 cm. Peso circa 795 g/ml. Tinto in fiocco. Nei colori chiari possono essere presenti fibre di tonalità scure. Possibili differenze per colore.
Cimosa ↓
Abrasion: Circa 100.000 cicli/metodo Martindale EN ISO 12947. **Solidità alla luce** (ISO) 5-7. **Pilling** (EN ISO) 3-4. **Solidità alla sfregamento** (ISO). Condizione a secco 4-5. Condizione umido 3-5. **Assorbimento acustico** (EN ISO 354) 0.45/Class D (a pannello (tesa)), 0.70/Class C (arricciata). **Airflow** 182 Pa s/m. **Ignifugazione:** AS/NZS 1530.3. AS/NZS 3837 Class 2. ASTM E84 class A incollato. ASTM E84 Class B non incollato. BS 5852 Crib 5. BS 5852 part 1. EN 1021-1/2. GB 50222 B1 se trattato ignifugo. IMO FTP Code 2010:Part 8. NF D 60 013. NFPA 260. SN 198 898 5.3 se trattato ignifugo. UNI 9175 11M. US Cal. Bull. 117-2013. ÖNORM B1 / Q1. (Disponibile copia del test).
Manutenzione Per favore seguire simboli ISO. Per disinfettare, vedi il sito kvadrat.dk.

ES

Aplicación Adecuada, para el uso en oficinas, hoteles, instituciones y hogares. Gran resistencia al desgaste.
Descripción 70% lana virgen, 30% viscosa. Anchura 130 cm. Peso aprox. 795 gr/ml. Teñido en material. En los colores claros puede haber fibras de otro color. Posibles variaciones de color.
Filo ↓
Resistencia al desgaste: Aprox. 100.000 ciclos según el método Martindale EN ISO 12947. **Resistencia a la luz** (ISO) 5-7. **Relleno** (EN ISO) 3-4. **Solidez al frotamiento** (ISO) seco 4-5, mojado 3-5. **Absorción acústica** (EN ISO 354) 0.45/Class D (estor), 0.70/Class C (cortina). **Airflow** 182 Pa s/m. **Resistencia al fuego:** AS/NZS 1530.3. AS/NZS 3837 Class 2. ASTM E84 class A adherido. ASTM E84 Class B sin pegar. BS 5852 Crib 5. BS 5852 part 1. EN 1021-1/2. GB 50222 B1 con tratamiento. IMO FTP Code 2010:Part 8. NF D 60 013. NFPA 260. SN 198 898 5.3 con tratamiento. UNI 9175 11M. US Cal. Bull. 117-2013. ÖNORM B1 / Q1. (Copia del informe de ensayos disponible).
Mantenimiento Consulte los símbolos ISO. Desinfección, visita kvadrat.dk.

JP

用途 オフィス、ホテル、各種施設、住宅インテリア。磨耗性大。
詳細 70% ビューウール、30% ヴィスコース。幅:130 cm。重量:1mあたり約795 g。布染め。明色の場合異質繊維が混在する場合があります。色彩ニュアンスに多少の違いが生じる可能性あり。
耳、ふち ↓
テスト
磨耗: マーチンデール法により摩擦運動約100,000回。EN ISO 12947。色褪せ保証:(ISO) 5-7。ピリング(EN ISO) 3-4。摩擦保証:(ISO) 乾燥状態 4-5、濡れた状態 3-5。吸音率(EN ISO 354) 0.45/Class D (パネル状)、0.70/Class C (ドレープ状)。気流:182 Pa s/m。耐炎性:AS/NZS 1530.3。AS/NZS 3837 Class 2。ASTM E84 class A 耐火性レベル1。ASTM E84 Class B unadhered。BS 5852 Crib 5。BS 5852 part 1。EN 1021-1/2。特殊耐炎処理を行うことにより、GB 50222 B1 に到達可能。IMO FTP Code 2010:Part 8。NF D 60 013。NFPA 260。特殊耐炎処理を行うことにより、SN 198 898 5.3 に到達可能。UNI 9175 11M。US Cal. Bull. 117-2013。ÖNORM B1 / Q1。(テストレポートのコピー入手可能。)
手入れ
 ISO シンボル参照。消毒について?kvadrat.dkまで参照ください。

CN

适用范围 办公室、宾馆酒店、公共设施、居家使用。耐耗性大。
成分 70% 羊毛, 30% 纤维。幅宽51英寸(130cm)。面料重量约795克/延米。原料染色。浅色中可能含杂色纤维轻微色差可能发生。
图纹方向 ↓
马丁代尔法 约100,000转。EN ISO 12947。光照色牢度(ISO) 5-7。起毛起球(EN ISO) 3-4。磨擦色牢度(ISO) 干燥 4-5, 湿 3-5。吸音系数(EN ISO 354) 0.45/Class D (隔断帘), 0.70/Class C (一般窗帘使用)。气流阻力 182 Pa s/m。阻燃性:AS/NZS 1530.3。AS/NZS 3837 Class 2。ASTM E84 class A 防火等级1。ASTM E84 Class B unadhered。BS 5852 Crib 5。BS 5852 part 1。EN 1021-1/2。特别耐火处理时GB 50222 B1 可以满足。IMO FTP Code 2010:Part 8。NF D 60 013。NFPA 260。特别耐火处理时SN 198 898 5.3 可以满足。UNI 9175 11M。US Cal. Bull. 117-2013。ÖNORM B1 / Q1。(可提供测试报告副本)。
维护 请参照ISO标志。消毒请参阅kvadrat.dk。



Quality and environmental system accreditation according to ISO 9001 and ISO 14001.

* ACT® Registered Certification Marks

* Abrasion test results exceeding ACT performance guidelines are not an indicator of product lifespan. Multiple factors affect fabric durability and appearance retention.

EU Ecolabel: Encouraging the use of sustainable fibres. Durable and high quality. Hazardous substances restricted.

Contact and further information kvadrat.dk



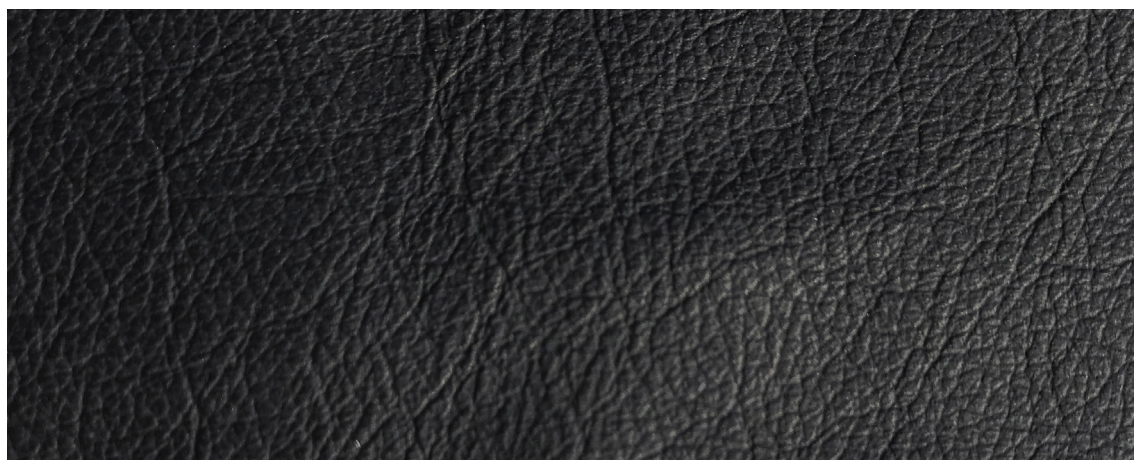
10 year warranty



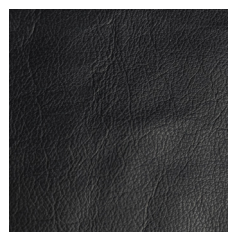
US contact info: 1-800-620-9309

Basic læder

Bent Hansen 



Cognac



Black

DK: Basic læder

Basic læder fra Bent Hansen er en korrigeret læder med god holbarhed for såvel private som offentlige miljøer. Læderet er gennemfarvet og kromgravet.

Basic læder fås i to farver: Black og Cognac.

EN: Basic leather

Basic leather from Bent Hansen is corrected leather with great durability. It is suitable for both private and public environments. Basic leather is dyed through and chrome tanned.

Basic leather is available in two colours: Black and Cognac.

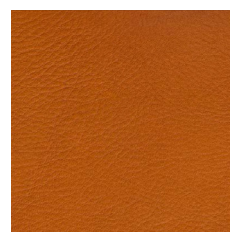
DK	EN
Tykkelse: 0,8 - 1,1 mm	Thickness: 0,8 - 1,1 mm
Tør, bøjningsholdbarhed/ antal gnidninger: 50.000 ved ISO 5402	Dry flexing resistance / number of motions: 50.000 at ISO 5402
Lysægted: Over 5, ved EN ISO 105 B02	Fastness to light: Over 5, at EN ISO 105 B02
Gnidningsægted, tør: 4, ved ISO 11640	Rubbing resistance, dry: 4, at ISO 11640
Gnidningsægted, våd: 3, ved ISO 11640	Rubbing resistance, wet: 3, at ISO 11640
Gnidningsægted, sved: 3, ved ISO 11640	Rubbing resistance, sweat: 3, at ISO 11640
Overfladeægted: 2, ved ISO 11644	Adhesion of finish: 2, at ISO 11644
Brandtest: Bestået, ved EN 1021 1-2	Fire test: Passed, at EN 1021 1-2
OBS Der forbeholdes ret til ændringer af de tekniske specifikationer uden varsel.	Note We reserve the right to alter technical specifications without notice.

Adrian læder

Bent Hansen



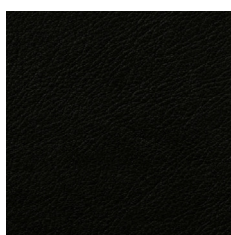
Nature



Cognac



Dark brown



Black

DK: Adrian

Anilin læder af europæiske huder. Læderet indeholder alle de naturlige karakteristika ved animalske huder, så som synlige insektbid og ar.

Tykkelse: 1,0 - 1,2 mm.

EN: Adrian

Aniline leather of European hides. The leather demonstrates all the natural characteristics of an animal hide such as visible insect bites and scars.

Thickness: 1.0 - 1.2 mm.

DE: Adrian

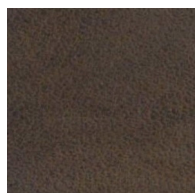
Anilin Leder aus Europäischen Rinder. Das Leder hat alle die natürlichen Eigenschaften einer Tierhaut, wie sichtbare Insektenstiche und Naben.

Stärke: 1,0 - 1,2 mm.

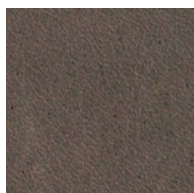
Test Analysen	Test Method Prüfverfahren	Measurement Unit Masseinheit	Guaranteed Garantiert
Colour fastness to and fro rubbing Abriebfestigkeit nach Veslic Dry/Trocken 50 c Wet/Nass 20 c	UNI EN ISO 11640	ISO 105 A03	> = 4 > = 3/4
Finish Adhesion Haftung der Oberflächenbehandlung	ISO 11644	N/Cm	> = 2
Tear strength - single edge tear Reißfestigkeit Hose	ISO 3377-1	N	> = 20

Davos

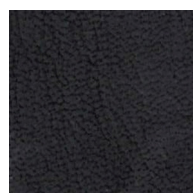
Bent Hansen®



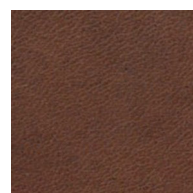
Umbra



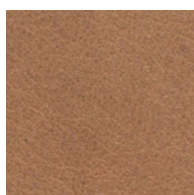
Tartufo



Black



Brown



Brandy

Davos

Information Natural aniline leather with nubuck effect and rustic appearance.
Use Upholstery leather for highest demands. Especial for large-area suites.
Thickness 1,1-1,3 mm
Raw material Only first class European raw ware.
Tanning The leathers are being produced ecologically safe, according to laws and regulations, without AZO colours
Inflammability DIN EN ISO 1021-1 EUFAC, DIN EN ISO 1021-2 EUFAC.
Cleaning and care instruction Davos is a high-quality aniline leather. Aniline leather is soft, warm and open pored full grain leather. Due to the open pores aniline leather is slightly sensitive. For everyday cleaning, it is sufficient to occasionally dust off the leather with a feather duster or a dry dust cloth. Stains can be additionally cleaned with a damp terry cloth. Not too wet! Dry the darkened area with a hair dryer to avoid remaining water marks. Always practice a cleaning test in a hidden area! Be especially careful with lighter leather. For difficult stains, it is always better to contact a specialist first. Damage can easily occur due to improper cleaning attempts. For regular treatment of Aniline leather we recommend Aniline Cream. The Aniline Cream prevents stains and dirt and keeps the leather soft and smooth. Older leather and leather which is regular exposed to sun or near a fireplace should additionally be treated with Aniline Protector. The Aniline Protector provides the necessary moisturizing of dry leather and prevents fading. Depending on the strain, heat, and light intensity, the leather should be sparingly maintained every three to twelve months.
Note Batch to batch variations in shade may occur within commercial tolerances.